

**LEGEND:**

- PROPOSED UNIT INTERIOR WALL
- - - EXISTING INTERIOR WALLS
- (618) EXISTING SUITE NUMBER
- EXISTING INTERIOR SUPPORT COLUMN
- T-\* TERRACE (\* DENOTES SUITE NUMBER)
- B-\* BALCONY (\* DENOTES SUITE NUMBER)

**UNIT AREAS:**

- SUITE 616 = 501 Sq.Ft.
- SUITE 617 = 734.2 Sq.Ft.
- SUITE 618 = 450.4 Sq.Ft.
- SUITE 619 = 800 Sq.Ft.
- SUITE 620 = 688 Sq.Ft.

**BALCONY AREAS:**

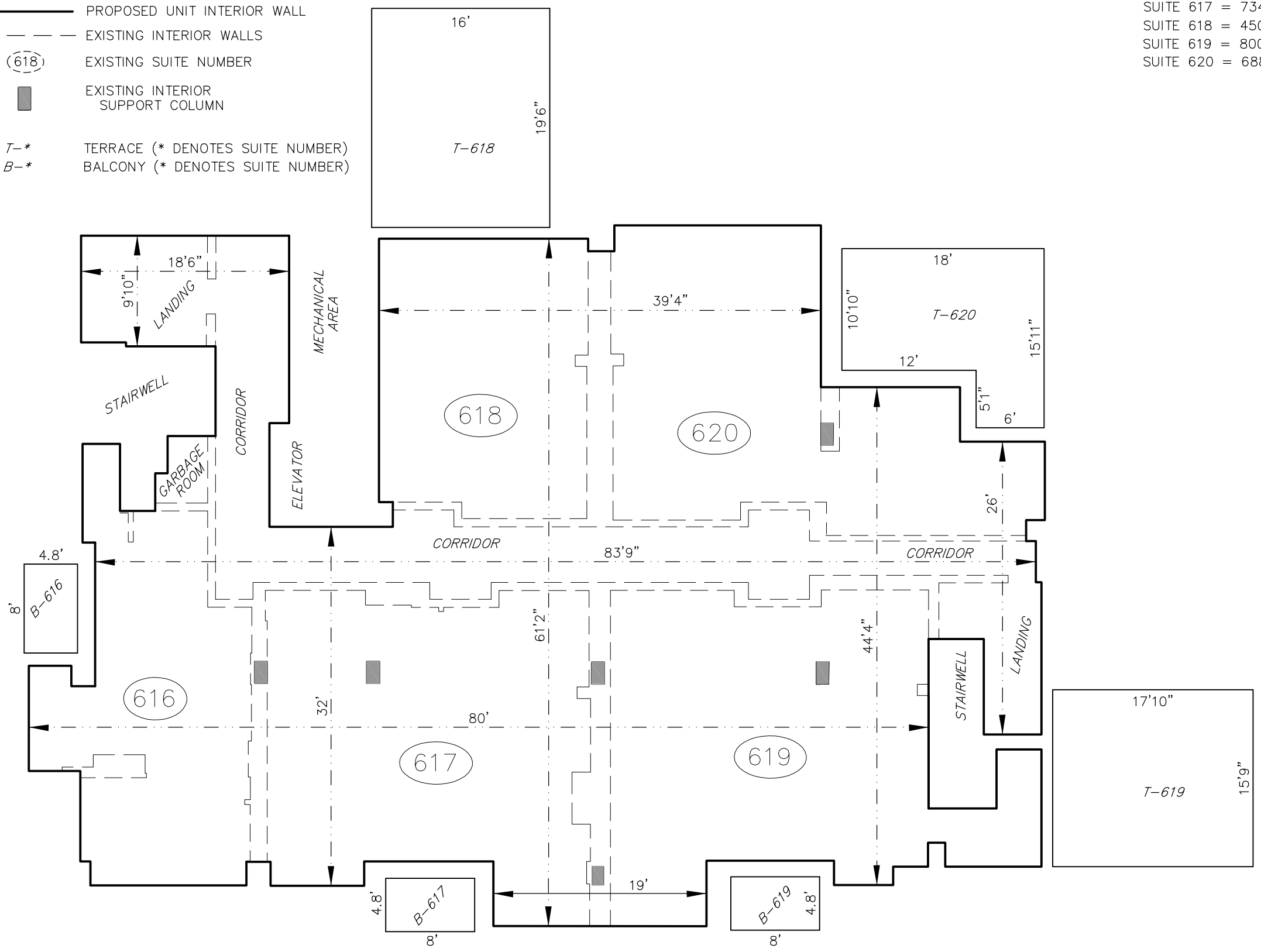
- B-616 = 38.4 Sq.Ft.
- B-617 = 38.4 Sq.Ft.
- B-619 = 38.4 Sq.Ft.

**TERRACE AREAS:**

- T-618 = 312 Sq.Ft.
- T-619 = 280.8 Sq.Ft.
- T-620 = 226 Sq.Ft.

**TOTAL AREAS:**

PROPOSED UNIT = 4,227 Sq.Ft.  
BALCONIES & TERRACES = 934 Sq.Ft.



**PLAN SHOWING**  
**LEVEL 6**  
 (SUITES 616 TO 620 INCL.,  
 CORRIDOR, AND STAIRWAY LANDINGS)  
 HALIFAX COUNTY CONDOMINIUM  
 CORPORATION No. 245  
 LOWER WATER STREET, HALIFAX  
 HALIFAX COUNTY, N.S.

*LOWER WATER STREET*

**Alderney Surveys Limited**  
 Nova Scotia Land Surveyors  
 12 Dawn Drive,  
 Dartmouth, Nova Scotia B3B 1H9

Drawn:	D.D.
Scale:	1" = 10'
Date:	OCTOBER 20, 2106

**162018-1**  
 File Number